

TEXAS A&M UNIVERSITY

Hurricane Experts Guide

Compiled by the Division of Marketing & Communications



Expert Areas

- 1** Important Online Resources and Contacts
- 2** How Hurricanes Form
- 3** Structural and Water Damage to Offshore Structures
- 4** Environmental and Ecosystem Effects of Hurricanes
- 5** Hurricane Effects on Animals and Pets
- 6** Personal, Societal and Social Aspects of Hurricanes
- 7** Beach Erosion
- 7** Chemical Safety
- 8** Coastal Infrastructure and Ecosystems
- 9** Warning Systems and Evacuation
- 10** Recovery and Sustainable Development
- 11** Hurricanes, Marine Life and Seafood

The 2018 hurricane season begins June 1 and Texas A&M University has nearly 40 faculty experts available to discuss every aspect of hurricanes from early formation, recovery and resilience and more until the season ends Nov. 30.

In this guide, media will find important information for not only experts, but research institutes, helpful web based tools, databases and a central point of contact for Texas A&M University inquiries regarding hurricane preparedness and response.



Important Online Resources and Contacts

TEXAS TASK FORCE ONE

An elite, highly trained and highly specialized group trained in disasters and terrorism. It can be mobilized within hours and is equipped to remain on 24-hour duty for days at a time.

Contact: Jeff Saunders (979) 458-6800 | jeff.saunders@teexmail.tamu.edu

THE TEXAS COASTAL PLANNING ATLAS

Detailed geographic information that assists in providing guidance in decision-making, policy, and planning for Texans living in this 18-county coastal region.

BUYERS B-WHERE

Enter a street address and receive a graphic and statistical risk assessment for a specific property. Comprehensive, easy to understand information delivered on-the-fly will provide a critical resource for existing and future property owners interested in making sound and safe investment decisions.

TEXAS EXTENSION DISASTER EDUCATION NETWORK (EDEN)

The Hurricane Resources website is available to the public. The site has links to information about both preand post-storm needs. Topics include general safety, food, people with special needs, health issues, restoring the home, financial recovery, and care for trees, pets and other animals, and septic systems.

Contact: Andy Vestal (979) 862-3013 | t-vestal@tamu.edu

Joyce Cavanagh (979) 845-3850 | jacavanagh@tamu.edu

HAZARD REDUCTION & RECOVERY CENTER

Established at Texas A&M University in 1988, the HRRC is an interdisciplinary collaborative effort focused on hazard analysis, emergency preparedness and response, disaster recovery, and hazard mitigation. Researchers study the full range of natural disasters and technological hazards.

TEXAS COMMUNITY WATERSHED PARTNERS PROGRAM (TCWP)

The TCWP provides education and outreach to local governments and citizens on the impacts of land use on watershed health and water quality.

DIVISION OF MARKETING & COMMUNICATIONS

Members of the news team can assist in seeking additional experts and fielding additional questions from media. tamunews@tamu.edu



TEXAS A&M EXPERTS ON

How Hurricanes Form



JOHN NIELSEN-GAMMON

Regents Professor of Atmospheric Sciences,
Texas A&M University College of Geosciences

Nielsen-Gammon serves as Texas State Climatologist and is an expert on severe storms, how hurricanes form, the history of Texas hurricanes, rapid formation of hurricanes in the Gulf of Mexico and the history of severe storms and hurricanes in the past 100 years.

Contact: (979) 862-2248 | n-g@tamu.edu

TIM LOGAN

**Instructional Assistant Professor
of Atmospheric Sciences**
*Texas A&M University College of
Geosciences*

Logan is an expert in severe storms, the formation of storms and lightning, and the damage caused by severe storms and hurricanes.

Contact: (979) 845-2004
tlogan52@tamu.edu

COURTNEY SCHUMACHER

Professor of Atmospheric Sciences,
*Texas A&M University College of
Geosciences*

Schumacher is an expert in tropical meteorology, large mesoscale convective systems, radar meteorology, and mesoscale-climate interactions.

Contact: (979) 845-5522
cschu@tamu.edu

ROBERT KORTY

**Associate Professor of Atmospheric
Sciences, Texas A&M University College
of Geosciences**

Korty is an expert on how hurricanes affect oceans and how climate affects hurricanes.

Contact: (979) 847-9090
korty@tamu.edu



TEXAS A&M EXPERTS ON

Structural and Water Damage to Offshore Structures



JEAN LOUIS BRIAUD

University Distinguished Professor of Civil Engineering, Texas A&M University College of Engineering

Briaud is an expert in erosion and “scour,” the remains of buildings damaged by seawater. He also is proficient in how water sweeps away materials or bridges and soil compaction in levees.

Contact: (979) 862-2248 | briaud@tamu.edu

RICK MERCIER

Professor of Engineering, Texas A&M University College of Engineering

Director, Offshore Technology Research Center

Mercier is an expert in off-shore drilling platforms, hurricane damage to oil rigs or any deep water off-shore structure, and oil rigs cut off from production.

Contact: (979) 845-6000
rsmercier@tamu.edu

BRENT MCROBERTS

Research Assistant Professor of Geography, Texas A&M University College of Geosciences

McRoberts is an expert in power outage prediction modeling, which gives forecasts of how many utility customers will lose power during and after a hurricane.

Contact: (979) 845-6075
mcrobert@tamu.edu

TEXAS A&M EXPERTS ON

Environmental and Ecosystem Effects of Hurricanes



SHARI YVON-LEWIS

Department of Oceanography Head and Professor of Chemical Oceanography, Texas A&M University College of Geosciences

Yvon-Lewis is a chemical oceanography and biogeochemistry expert who has conducted extensive post-hurricane research in Galveston Bay and has a thorough dataset of Bay water quality data before and after the hurricane.

Contact: (979) 458-1816
syvon-lewis@ocean.tamu.edu

ANTHONY KNAP

Director, Geochemical and Environmental Research Group (GERG)

Professor of Oceanography, Texas A&M University College of Geosciences

Knap is an expert in effects of contaminants on marine environments, ocean health and human health interactions. He also co-leads the Texas A&M Superfund.

Contact: (979) 458-9328
tknap@tamu.edu

LISA CAMPBELL

Professor of Oceanography, Texas A&M University College of Geosciences

Campbell is an expert in biological oceanography, phytoplankton ecology, harmful algal blooms and is well-versed in the effects hurricanes can have on ecosystems.

Contact: (979) 845-5706
lisacampbell@tamu.edu

JASON SYLVAN

Oceanography Assistant Professor, Texas A&M University College of Geosciences

Sylvan is well-versed in the short-term and long-term effects of hurricanes on environments and ecosystems, including coral reefs.

Contact: (979) 845-5105
jasonsylvan@tamu.edu

ROBIN AUTENRIETH

Professor and Head of the Zachry Department of Civil Engineering, Texas A&M University College of Engineering

Autenrieth is an expert in water cleanup, environmental damage of waters from hurricanes and floods, and contaminated water and the many problems it poses.

Contact: (979) 845-2438
rautenrieth@civil.tamu.edu



TEXAS A&M EXPERTS ON

Hurricane Effects on Animals and Pets



BILL MOYER

Professor and Head of Large Animal Clinical Services, *Texas A&M University College of Veterinary Medicine & Biomedical Sciences*

Moyer was put in charge of converting Texas A&M's Large Animal Hospital into special human needs hospital that served hundreds of elderly and special needs patients during Hurricane Rita and will take a similar leadership role if such plans are needed again.

Contact: (979) 845-9127 | wmoyer@cvm.tamu.edu

WESLEY BISSETT

Associate Professor of Veterinary Medicine, *Texas A&M University College of Veterinary Medicine & Biomedical Sciences*

Bissett is an expert on displaced pets, pets relocating to unfamiliar areas, pets facing isolation and separation anxiety, etc.

Contact: (979) 845-3541
wbissett@cvm.tamu.edu

MURL BAILEY

Professor of Veterinary Medicine, *Texas A&M University College of Veterinary Medicine & Biomedical Sciences*

Bailey is an expert on zoonotic diseases (those passed from animals to humans) and problems that can arise if this occurs.

Contact: (979) 845-5976
m-bailey@tamu.edu

GARRY ADAMS

Senior Professor of Veterinary Medicine, *Texas A&M University College of Veterinary Medicine & Biomedical Sciences*

Adams is well-versed on numerous public health issues, diseases stemming from disasters and treatment strategies for dealing with large numbers of injured or sick animals.

Contact: (979) 845-9816
gadams@cvm.tamu.edu

DEB ZORAN

Professor of Veterinary Medicine, *Texas A&M University College of Veterinary Medicine & Biomedical Sciences*

Zoran is an expert on displaced pets, pets relocating to unfamiliar areas, pets facing isolation and separation anxiety, etc.

Contact: (979) 845-2351
dzoran@cvm.tamu.edu



TEXAS A&M EXPERTS ON

Personal, Societal and Social Aspects of Hurricanes



STEPHEN MAREN

Professor of Psychology, *Texas A&M University College of Liberal Arts*

Maren's research includes neural systems for emotion, learning, and memory as well as contextual regulation of memory encoding and retrieval, and fear, anxiety, and PTSD.

Contact: (979)-458-7960 | maren@tamu.edu

STJEPAN MESTROVIC

Professor of Sociology, *Texas A&M University College of Liberal Arts*

Mestrovic serves as an expert in social order (or lack of it) and lawlessness in times of crises.

Contact: (979) 845-6121
mestrovic@tamu.edu

NATALIE JOHNSON

Assistant Professor, *Texas A&M University School of Public Health*

Johnson studies the effects of air pollution on pregnant women and their babies, and she has looked at the effects post-hurricane emissions of potentially dangerous chemicals may have on this population.

Contact: (979) 436-0613
hshive@tamhsc.edu

ANGELA CLENDENIN

Instructional Assistant Professor, *Texas A&M University School of Public Health*

Cleundenin has served as the public information officer for the Veterinary Emergency Team and has expertise in risk communication and emergency management.

Contact: (979) 436-0613
hshive@tamhsc.edu



TEXAS A&M EXPERT ON

Beach Erosion



WILLIAM MERRELL

Professor and Head of the Department of Marine Sciences, Texas A&M University Galveston Campus

Merrell serves on the City of Galveston Hurricane Task Force. He is also an expert on beach and shoreline erosion, effects of hurricanes on the entire shoreline of the Gulf of Mexico and proponent of the “Ike Dike,” a coastal surge suppression barrier for the Houston/Galveston area, based on a similar project in the Netherlands.

Contact: (409) 740-4732 | merrellw@tamug.edu



TEXAS A&M EXPERTS ON

Coastal Infrastructure and Ecosystems

SAMUEL BRODY

Professor and Head of Marine Sciences, *Texas A&M University Galveston Campus*

Brody directs the Institute for Sustainable Coastal Communities (ISCC) and the Center for Texas Beaches and Shores (CTBS), headquartered at Texas A&M at Galveston. Brody helps conserve and protect the Texas shoreline, bays and waterways. He prepares coastal communities to absorb, adapt and respond to hurricanes, coastal storms and flooding.

Contact: (409) 741-4076
sbrody@tamu.edu

IGNACIO RODRIGUEZ-ITURBE

Distinguished University Professor and Texas A&M Engineering Experiment Station Distinguished Research Professor, *Texas A&M University Department of Ocean Engineering*

Rodriguez-Iturbe studies coastal ecosystems and the challenges they pose to coastal cities and communities.

Contact: (979) 845-3141
irodriguez@ocen.tamu.edu



TEXAS A&M EXPERTS ON

Warning Systems and Evacuation



JOHN COOPER

Associate Professor of Practice, *Texas A&M University College of Architecture*

Urban Planning and Outreach Coordinator, *Hazard Reduction & Recovery Center and the Center for Housing and Urban Development*

Cooper's areas of interest include principles of inclusive planning and plan quality. His research and outreach focuses on emergency management, disaster planning and mitigation with a primary focus on socially vulnerable populations and communities.

Contact: (979) 862-2272 | jcooper@arch.tamu.edu

WALTER GILLIS PEACOCK

Director, *Hazard Reduction & Recovery Center*

Professor of Urban Planning, *Texas A&M University College of Architecture*

His research has focused on evacuation, restoration and long-term recovery from disasters, disaster mitigation and resilience.

Contact: (979) 845-7853
peacock@tamu.edu

GEORGE O. ROGERS

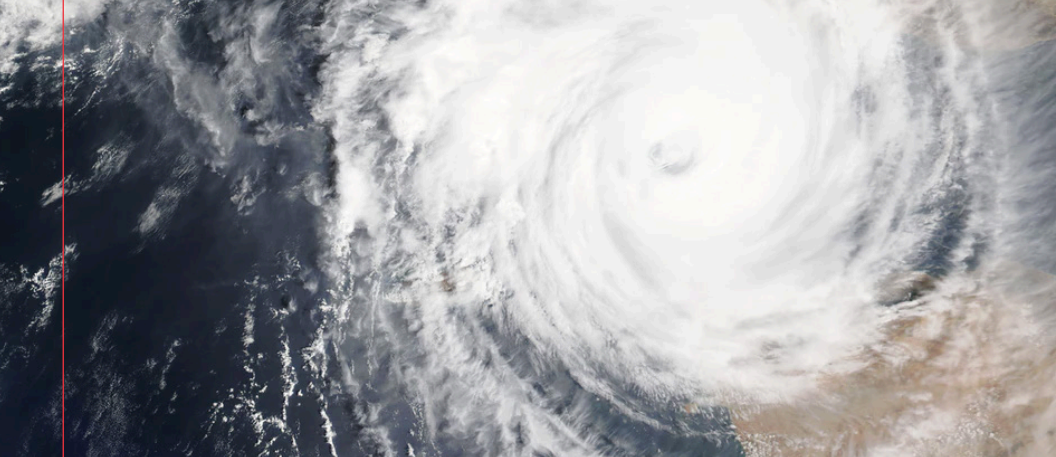
Senior fellow, *Hazard Reduction & Recovery Center*

Director, *Urban and Regional Science Graduate Program*

Professor, *Texas A&M University College of Architecture*

His research has focused on warning systems, risk perception and sustainable development.

Contact: (979) 845-7284
grogers@tamu.edu



TEXAS A&M EXPERTS ON

Recovery and Sustainable Development



SHANNON VAN ZANDT

Director, Master of Urban Planning program

Associate Professor, Texas A&M University College of Architecture

Director, Center for Housing and Urban Development, and Hazard Reduction & Recovery Center fellow

Director, Master of Urban Planning program

Van Zandt's areas of interest include post-disaster housing recovery, social vulnerability, community resilience and hazards mitigation.

Contact: (979) 458-1233 | svanzandt@tamu.edu

SHERRY BAME

Professor, Texas A&M University College of Architecture

Fellow, Hazard Reduction & Recovery Center

Bame has a special interest in health systems planning and policy, environmental health, and health-related disaster planning, particularly related to 211 call centers and unmet needs.

Contact: (979) 845-8406
sbame@tamu.edu

ERIC BARDENHAGEN

Professor, Texas A&M University College of Architecture

Fellow, Hazard Reduction & Recovery Center

Bardenhagen's interests include natural and cultural resource planning, natural hazards and disaster planning for national parks.

Contact: (979) 458-3414
barbenhagen@tamu.edu



TEXAS A&M EXPERTS ON

Hurricanes, Marine Life and Seafood

ANDREW ROPICKI

Assistant Professor, Texas A&M University College of Agriculture and Life Sciences

Texas Sea Grant Marine Economics Extension Specialist

Ropicki can comment on assessments of storm impacts on fishing infrastructure (vessels, docks, processing equipment, etc.) and on sessile fisheries (oysters).

Contact: (361) 825-6210
andrew.ropicki@ag.tamu.edu

LAURA PICARIELLO

Texas Sea Grant Extension Fisheries Specialist Corpus Christi

Picariello has experience working with commercial fisheries, both in Texas and across the Gulf of Mexico.

Contact: (361) 825-6210
lpicadilly@gmail.com



today.tamu.edu

Follow us on Twitter: @TAMU